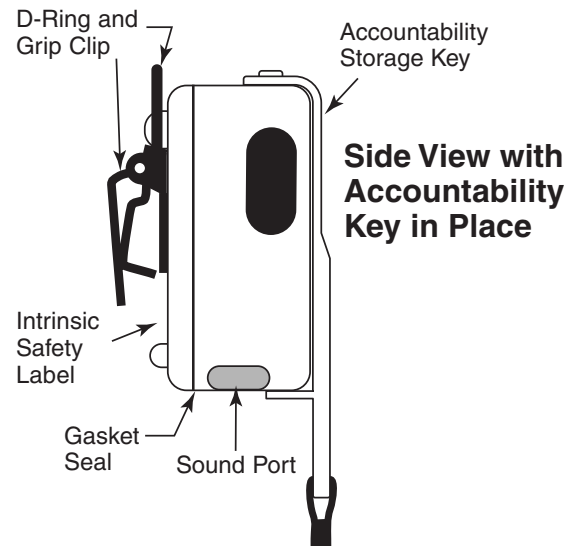
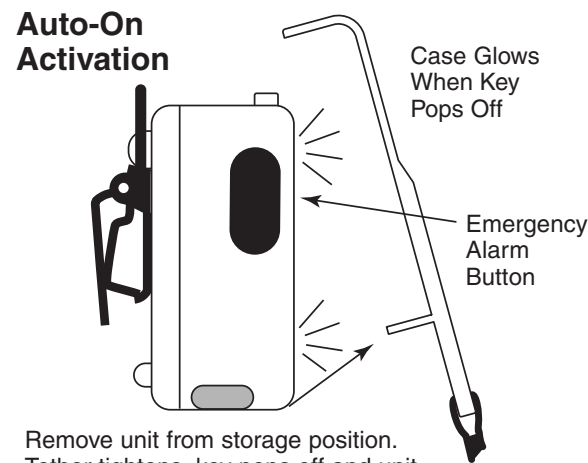


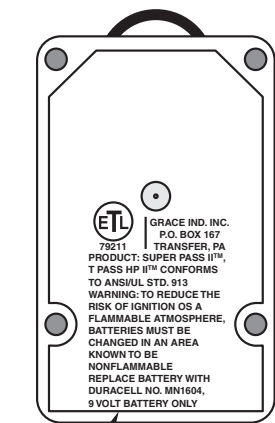
## SuperPASS® II FEATURES AND LABELING



Side View with  
Accountability  
Key in Place

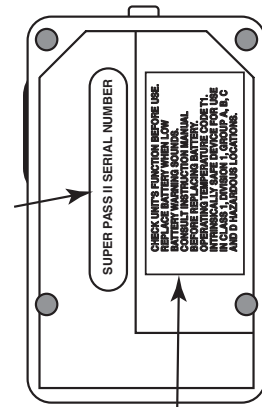


Remove unit from storage position. Tether tightens, key pops off and unit automatically goes into "Sensing" mode.



Back Inside  
View

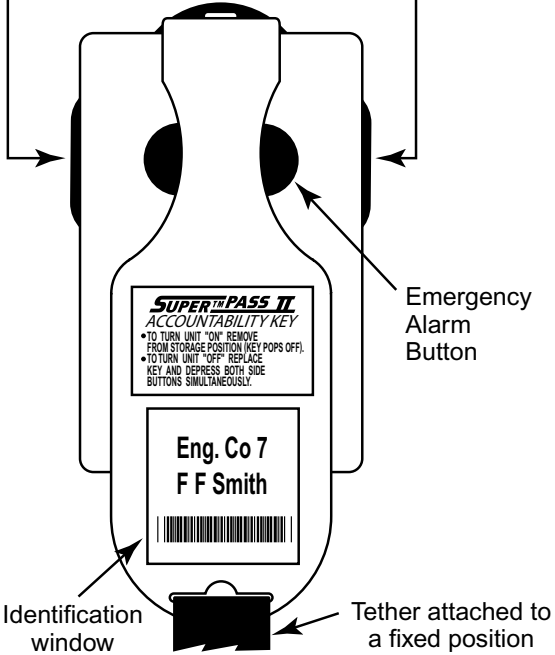
Battery Chamber  
View



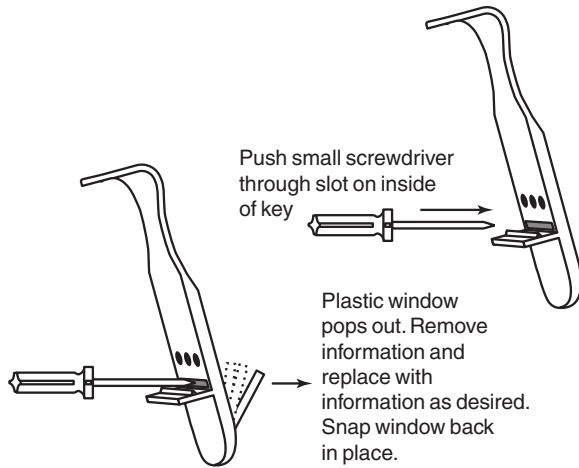
General  
Instruction  
Label

## Front View with Accountability Key in Place

1. To **Reset**, press both side buttons simultaneously when accountability key is off unit.
2. To turn **OFF**, replace accountability key and press both side buttons simultaneously.

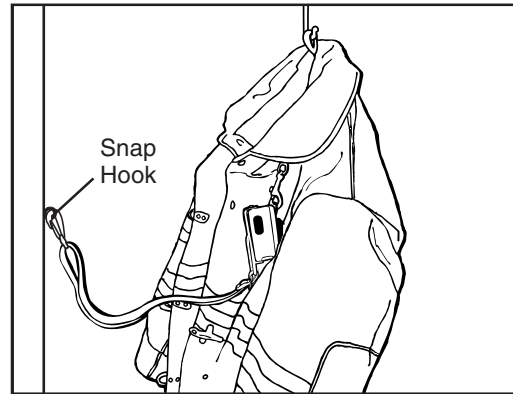


## Changing the identification information in the Accountability Storage Key window

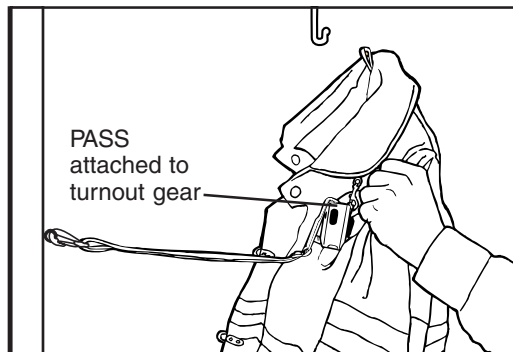


An added benefit of the new Grace system is the Accountability Storage Key. The clear Identification Window located on the front of the key provides the opportunity for specific identity of the PASS user through the ability to personalize keys with pictures, names, numbers, dept. ID, bar-codes, etc. The clear access window easily snaps into place to protect the enclosed information and provide instant access for quick ID should the need arise. Information in the Identification Window can easily be changed by partially popping the ID window out with a small, flat blade screwdriver through the access slot located on the back side of the key.

## Pull Away Tether for Auto-On Activation from Storage Positions



Snap hook attached to Transportation or Fixed Storage Position.



Pull turnout gear away, the Tether tightens and pulls the Accountability Key off the PASS. This will automatically activate the PASS into the Sensing Mode.

The SuperPASS® II is designed to be automatically activated into the **Sensing** mode (motion sensing mode) or turned **ON** when removed from the PASS storage position, whether it is a transportation or a fixed storage position. When removed from the storage position, the tether will tighten and the Accountability Storage Key will automatically pop off putting the SuperPASS® II into the **Sensing** mode. At this point, the unit can be **reset** (from the alarm to the sensing mode) but cannot be turned **OFF** until the Accountability Storage Key is replaced and both side buttons pressed simultaneously.

The Accountability Storage Key has an adjustable tether for ease of use. The tether can be adjusted from approx. 18" to 36" in length. This allows for easy utilization whether you are anchoring the tether to a transportation position (such as to a seat in a vehicle) or a fixed storage position (such as in the fire station). Accountability Storage Keys are available with various length tethers to facilitate various operational needs.

The intention is to provide a higher level of safety to the Fire Fighter by insuring the PASS is automatically turned ON.

## Warranty Information

Grace Industries, Inc. warrants the SuperPASS® II to be free from defects in workmanship and materials for a period of one year from the date of purchase. This warranty is valid only when the returned SuperPASS® II is accompanied by a sales slip or other proof of purchase that states the date and location of purchase. Grace Industries, Inc. will not repair or replace any merchandise under warranty which has been damaged because of accident, misuse or abuse of the SuperPASS® II while in possession or control of the consumer. This warranty is void if any attempt to repair or replace parts was made or attempted by other than qualified Grace Industries, Inc. personnel. This warranty is void if any of the sealed compartments are opened or tampered with. Send all returned merchandise, prepaid and accompanied by proof of purchase to: Grace Industries, Inc., Repair Division, 305 Bend Hill Road, Fredonia, PA 16124. Grace Industries, Inc. shall not be liable for any direct, incidental or other consequential loss or damage arising out of the failure of the device to operate.

The sole and exclusive remedy under all guarantees or warranties, expressed or implied, is strictly limited to repair or replacement as herein provided. ALL IMPLIED WARRANTIES, INCLUDING BUT NOT LIMITED TO, WARRANTIES OF FITNESS AND MERCHANTABILITY, ARE HEREBY LIMITED IN DURATION TO A PERIOD ENDING ONE (1) YEAR FROM THE DATE OF PURCHASE. The warranty and liability set forth in the prior paragraphs are in lieu of all other warranties, expressed or implied, in law or in fact, including implied warranties of merchantability and fitness for a particular purpose. Some states do not allow limitations on how long an implied warranty lasts, so the above limitations may not apply to you.

This warranty gives you specific legal rights and you may also have other rights which may vary from state to state.

The information contained in this booklet is believed to be accurate and reliable. Grace Industries, Inc. provides this information as a guide only.

SuperPASS® II system technical assistance is available by contacting Grace Industries, Inc. at 724-962-9231.

For training purposes, a copy of this information is available by contacting Grace Industries, Inc.

SuperPASS® II issues may be reported at any time to Grace Industries, Inc. at 724-962-9231.

# SuperPASS® II USER'S INFORMATION

Only To Be Removed By End User



MADE IN  
USA

Front View  
with  
Accountability  
Key in Place

Grace Industries, Inc.  
305 Bend Hill Road, Fredonia, PA 16124  
724-962-9231 • FAX 724-962-3611  
www.graceindustries.com



Front View without  
Accountability Key  
in Place

**GRACE**  
INDUSTRIES, INC.  
Solutions for Life Safety

**GRACE**  
INDUSTRIES, INC.  
Solutions for Life Safety

## SuperPASS® II

The SuperPASS® II is the first of the **Auto On** series of Personal Alert Safety Systems (PASS) from Grace Industries, Inc. The **Auto On** feature provides the next level of assurance that PASS are not only being worn, but are turned on **Automatically** when removed from a transportation or fixed storage position.

### Operating Instructions

When removed from a storage position, the SuperPASS® II Accountability Storage Key will automatically pop off putting the unit into the **Sensing** mode (motion sensing). When the SuperPASS® II turns **ON**, the operational signal (a series of loud attention getting audio tones) will be heard, accompanied by the visual alternating display of four yellow LEDs. The alternating display indicates the unit is in the **Sensing** mode.

When there is lack of motion for approximately 18 to 23 seconds, the unit will go into **Pre-Alert** and announce a **Pre-Alert** Signal. While in **Pre-Alert**, the yellow alternating display is interrupted by intermittent pulsing of four red LEDs accompanied by a progressively louder sweeping **Pre-Alert** audio signal. The longer the unit is in **Pre-Alert**, the louder the sweeping **Pre-Alert** signal becomes, signifying the unit is closer to going into **Alarm**. When there is lack of motion for approximately 30 to 35 seconds, the unit will go into the **Alarm** mode. When in **Alarm**, the **Pre-Alert** display is replaced by a constant rapid pulsing of four red LEDs accompanied by a rapidly modulated loud audio **Alarm Signal**.

While in the **Sensing** mode, the SuperPASS® II may be put into **Alarm** at any time by manually pressing the alarm button located on the front surface of the unit. Once in **Alarm**, the unit can be reset or returned to the **Sensing** mode by simply pressing both side buttons simultaneously. To turn the SuperPASS® II **OFF**, simply replace the Accountability Storage Key and press both side buttons simultaneously. **Always test unit prior to use.**

An added benefit of the new Grace system is the Accountability Storage Key. The clear Identification Window provides the opportunity for specific identity of the PASS user through the ability to personalize keys with pictures, names, numbers, dept. ID, barcodes, etc. The clear access window easily snaps into place to protect the enclosed information and provide instant access for quick ID should the need arise.

**Note:** See back page for information on Accountability Storage Key tether attachment for **Auto On** activation.

The PASS should be securely attached to a waist strap on the lower right hip or on a vertical strap on the upper left shoulder, in the vertical position. However the ideal wearing position of PASS is often best determined by the end user for ease of access and operation.

Each member involved in rescue, fire suppression, or other hazardous duties **shall** be provided with and **shall** use a PASS device in the hazardous area.

All personnel should be thoroughly familiar with and trained in the proper operation of PASS prior to field use. Failure to do so may expose the user to serious injury or loss of life.

### Battery Installation / Replacement



To reduce the risk of ignition of a flammable atmosphere, batteries must only be changed in an area known to be non-flammable. To change the battery, remove the back cover, disconnect and dispose of the spent battery and connect the new battery. Replace the back cover and gently tighten all four screws using a criss-cross pattern for even gasket pressure ensuring a good seal. **Do not over tighten screws.**

**WARNING!!** Always use the specified 9 volt alkaline battery. The Duracell MN1604 is recommended for optimum performance, as other batteries may not provide the same operating life. Replacing the battery twice per year is recommended unless indicated sooner by the Low Battery Alarm. The Low Battery Alarm will sound when the battery has been exhausted to 20% of capacity (indicating approximately 1 hour operating time remains). Immediate replacement of the battery is necessary when the low battery alarm sounds. The low battery alarm is an easily recognized series of three audio beep tones enunciated every five seconds when the PASS is in the **Sensing** mode. Grace Industries, Inc. assumes no liability for mechanical, electrical or other types of battery failure. **WARNING: Substitution of components may impair intrinsic safety!**

### Limitations

SuperPASS® II is designed to meet the design and performance requirements for Personal Alert Safety Systems (PASS) to be used by fire fighters engaged in rescue, fire fighting and other hazardous duties. Failure to ensure that SuperPASS® II is fully operational prior to use, may expose the user to serious injury or loss of life. There is no inherent guarantee against PASS failure. Even the best PASS cannot compensate for abuse or the lack of a PASS training and maintenance program.

Although SuperPASS® II can be checked for proper operation, most performance properties of the PASS cannot be tested by the end user in the field.

### Maintenance

The SuperPASS® II requires minimum maintenance and will provide years of service.

### Please Observe The Following Guidelines

- At the end of each use, clean unit with a damp cloth and warm water. Do Not use cleaning solvents.
- Inspect unit for signs of physical damage.
- Store SuperPASS® II in a dry, well ventilated area consistent with battery manufacturers requirements. Duracell's recommended storage conditions are: 50°F (10°C) to 77°F (25°C) at no more than 65 percent relative humidity.
- Units contaminated by chemical or radioactive materials must be disposed of or decontaminated in accordance with all applicable regulatory standards.
- Replace battery every 6 months or sooner if indicated by the low battery alarm.
- Do Not mark or apply paint to case.

### Safety Certifications

Certified Intrinsically Safe: UL913, for use in Class I, Division 1, Group A, B, C and D Hazardous Locations.

### Specifications

**Dimensions:** 2.1" wide by 3.2" high by 1.6" deep.  
**Weight:** seven ounces with battery (without key).  
**Alarm Audio Output:** 98+ dBA @ 10 feet.  
**Visual / Audio Mode Display:**

#### OFF

- storage key in place with no LED display
- a series of de-escalating, loud, attention getting audio tones

#### ON

- storage key removed with an alternating, yellow alternating LED display
- a series of escalating, loud, attention getting audio tones

#### Pre-Alert

- no motion sensed for 18 - 23 seconds
- yellow wig-wag LED display is interrupted by the pulsing of four red LED's
- accompanied by a progressively louder, sweeping audio signal

#### Alarm

- no motion sensed for 30 - 35 seconds
- yellow wig-wag LED display is replaced by the rapid pulsing of four red LED's
- accompanied by a rapidly modulated loud (98+dBA) audio signal
- the alarm signal is between 1,000 and 3,000 Hertz and cycles at 5.25 seconds on and .75 seconds off as an aid for determining direction when personnel need assistance

**Activation:** all electronic switching

#### Auto-On

- going from **Off** to the **Sensing** Mode
- when removed from storage position, Accountability Storage Key pops off and unit goes into the **Sensing** mode

#### Alarm

- unit may be put into **Alarm** from the **Sensing** mode at any time by pressing the button on the front of the unit

#### Reset

- when in **Alarm**, the unit may be reset to the **Sensing** mode by simultaneously pressing both side buttons

#### OFF

- unit may be turned **Off** by replacing the accountability storage key and simultaneously pressing both side buttons

**Case:** rugged, high temp., impact resistant, translucent, Apache Yellow polycarbonate. Entire case glows during the "Sensing", **Pre-Alert** and **Alarm** modes.

**Methods of Attachment:** rugged Grip Clip and D-ring for versatility in attaching to gear

**Sound discernability:** 6 dBA against given background noise

**Battery:** 9 volt Duracell MN1604 recommended

**Battery Life:** estimated at 100 hrs in **Sensing** mode and 2 to 4 hours in the **Alarm** mode

**Product Life:** approximately 3 to 7 years depending upon frequency of use. Product should be retired from service when severely damaged

### For SuperPASS® II with Temperature Sensing Option

Your unit is equipped with temperature sensing capability if the side and alarm buttons are red and the serial number ends in an **H**. The serial number is located in the battery chamber.

The SuperPASS® II temperature alarm (a rapid ringing tone) should not be regarded as an absolute measure of existing temperatures. The temperature alarm may sound an alarm earlier or later with regards to integrated time temperature sensing. The time variation is dependent upon where the unit is worn and the environmental conditions, at the fire scene. When the temperature alarm solid-state thermostat threshold has been exceeded by exposure to extreme environmental conditions, the unit will sound the temperature alarm audio tone with a specific LED display. The temperature alarm sound signature is a loud, piercing, rapid chirping tone accompanied by the slow pulsing of four red LEDs. The temperature alarm cannot be turned off. The unit must cool down below the temperature alarm threshold and the alarm will automatically reset.

#### Approximate Temp. Alarm Response Times

- 350°F - 6 minutes
- 300°F - 8 minutes
- 250°F - 10 minutes
- 200°F - 12 minutes

SuperPASS® II is also available in Manual Activation and with various alarm times (30, 60, 90, 120 seconds)