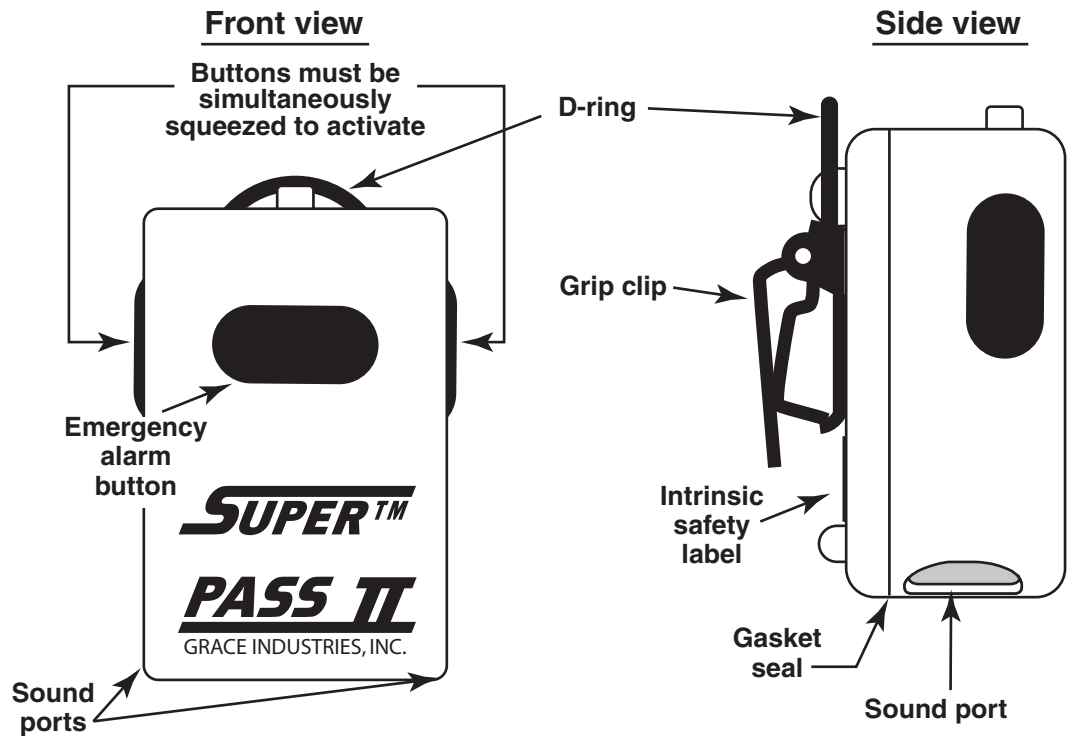


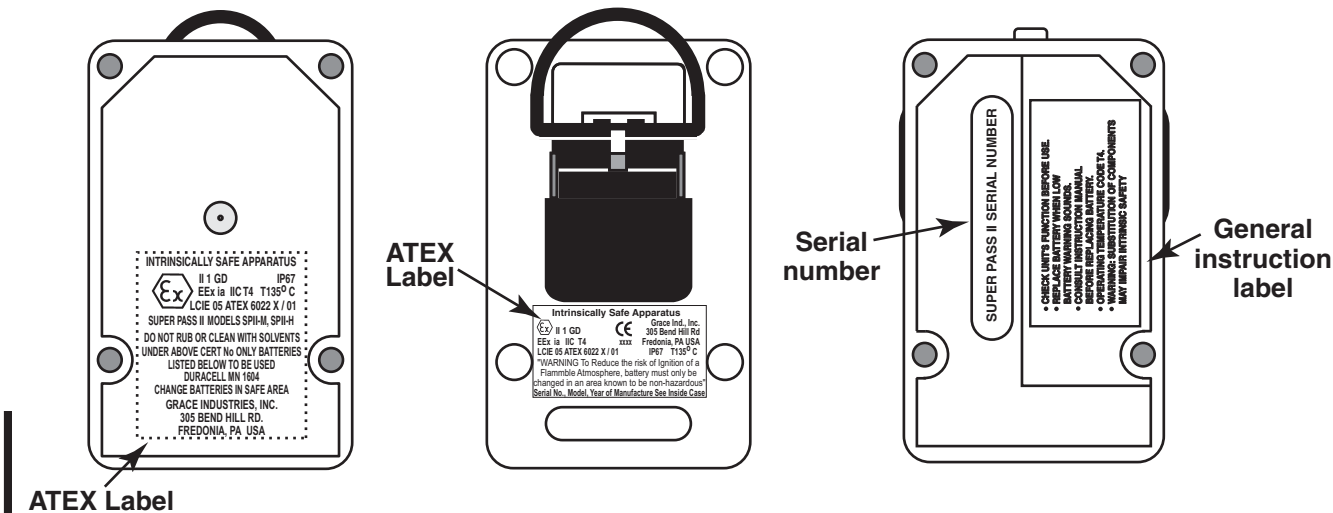
SUPER PASS II FEATURES & LABELING



Inside back

Outside back

Battery chamber



SAFETY CERTIFICATIONS

LCIE 05 ATEX 6022 X / 01
 CE - Directive 2014/34/EU
 Ex - II 1 GD EEx ia IIC T4, IP67, T135°C
 - EN 50014 (1997) + amendments 1 & 2
 - EN 50020 (2002)
 IP67 Tested by MET Labs

WARRANTY

Grace Industries, Incorporated warrants your SUPER PASS to be free from defects in workmanship and materials for a period of one year from the date of purchase. This warranty is valid only when the returned SUPER PASS is accompanied by a sales slip or other proof of purchase that states the date and location of purchase. Grace Industries, Inc. will not repair or replace any merchandise that has been damaged because of accident, misuse or abuse of the SUPER PASS while in possession or control of the consumer. This warranty is void if any attempt to repair or replace parts were made or attempted by other than qualified Grace Industries, Inc. personnel. This warranty is void if any of the sealed compartments are opened or tampered with. Send all returned merchandise prepaid and accompanied by proof of purchase to: Grace Industries, Inc., Repair Division, 305 Bend Hill Road, Fredonia, PA 16124. Grace Industries, Inc. shall not be liable for any direct, incidental or consequential loss or damage arising out of the failure of the device to operate.

The sole and exclusive remedy under all guarantees or warranties, expressed or implied is strictly limited to repair or replacement as herein provided. ALL IMPLIED WARRANTIES, INCLUDING BUT NOT LIMITED TO, WARRANTIES OF FITNESS AND MERCHANTABILITY, ARE HEREBY LIMITED IN DURATION TO A PERIOD ENDING ONE (1) YEAR FROM THE DATE OF PURCHASE. The warranty and liability set forth in the prior paragraphs are in lieu of all other warranties, expressed or implied, in law or in fact, including implied warranties of merchantability and fitness for a particular purpose. Some states do not allow limitations on how long an implied warranty lasts, so the above limitations may not apply to you.

This warranty gives you specific legal rights and you may also have other rights which vary from state to state.

NOTE: The information contained in this booklet is believed to be accurate and reliable. Grace Industries, Inc. provides this information as a guide only.

SUPER PASS II

ATEX Certified
 Manual Activation
 Standard Timing

USER'S INFORMATION



0891

Products for Life Safety

Grace Industries, Inc.
 305 Bend Hill Road, Fredonia, PA 16124
 Ph. (724) 962-9231 • Fx. (724) 962-3611

The SUPER PASS II is a personal alert safety system (PASS) that sounds a loud easily recognized signal approximately 30 seconds after the wearer becomes motionless. This unique device incorporates an innovative mechanical design with advanced data processing circuitry to bring you the most reliable and rugged PASS device available. In units so equipped, a temperature sensor sounds three audio beep tones when excessively high temperatures are experienced.

Operating Instructions

Always test the unit prior to each use. To turn unit on and off, simultaneously depress buttons located on sides of unit. This feature safeguards against accidental turn off. When activated, an acknowledgment click sound will be heard and SUPER PASS II will display a bright yellow wig-wag type display. Unit is now in the "Sensing" mode.

If the wearer should become motionless for a period of approximately 18 - 23 seconds, a 12 second pre-alert ticking will be heard. If no movement is detected for 30 - 35 seconds, the SUPER PASS II will go into a loud alarm that can be heard one half mile or greater. This sound is easily recognized and provides an audio beacon that permits pin pointing the exact location of where the person is down. While SUPER PASS II is in the automatic mode, the emergency alarm can be manually activated by depressing the button located on the front surface of unit. The emergency alarm can also be manually activated when the unit is in the "off" mode by depressing the button located on the front surface of unit. **Note:** The alarm will continuously sound and can only be turned off by depressing both side buttons simultaneously.

For Super Pass II with Temperature Sensing Option

Your unit is equipped with temperature sensing capability if the side and alarm buttons are red and the serial number ends in an H. The serial number is located in the battery chamber.

The Super Pass II temperature alarm (three audio beep tones) should not be regarded as an absolute measure of existing temperatures. The temperature alarm may sound an alarm earlier or later with regards to integrated time temperature sensing. The time variation is dependent upon where the unit is worn and the environmental conditions at the fire scene.

When the temperature alarm solid-state thermostat threshold has been exceeded by exposure to extreme environmental conditions the unit will sound the temperature alarm audio tone with a specific LED display. The temperature alarm sound signature is a loud, piercing rapid chirping tone accompanied by the slow pulsing of four red LEDs. The temperature alarm cannot be turned off. The unit must cool down below the temperature alarm threshold and the alarm will automatically reset.

Temp. Alarm Approx. Response Times

- 350°F - 6 minutes
- 300°F - 8 minutes
- 250°F - 10 minutes
- 200°F - 12 minutes

Battery Installation / Replacement

To reduce the risk of ignition of a flammable atmosphere, batteries must only be changed in an area known to be non-flammable. To change the battery, remove the four screws securing the back. Remove the back cover, disconnect and dispose of the spent battery and connect the new battery. Replace the back cover and gently tighten all four screws using a crisscross pattern for even gasket pressure ensuring a good seal. Do not over tighten screws.

WARNING!! Always use the specified 9 volt alkaline battery. The Duracell MN1604 is recommended for optimum performance, as other batteries may not provide the same operating life. Replacing the battery twice per year is recommended unless indicated sooner by the Low Battery Alarm. The Low Battery Alarm will sound when the battery has been exhausted to 20% of capacity (indicating approx. 1 hour operating time remains). Immediate replacement of the battery is necessary when the low battery alarm sounds. The

low battery alarm is an easily recognized series of three audio beep tones enunciated every five seconds when the PASS is in the "Sensing" mode. Grace Industries, Inc. assumes no liability for mechanical, electrical or other types of battery failure. " Warning - substitution of components may impair intrinsic safety."

Failure to ensure that Super Pass II is fully operational prior to use, may expose the user to serious injury or loss of life. Although Super Pass II is a durable product, there is no inherent guarantee against PASS failure. Even the best PASS cannot compensate for abuse or the lack of a PASS training and maintenance program.

Although Super Pass II can be checked for proper operation, most performance properties of the PASS cannot be tested by the end user in the field.

Maintenance

The Super Pass II requires minimum maintenance and will provide years of service.

Please Observe The Following Guidelines

- * At the end of each use, clean unit with a damp cloth and warm water. Do Not use cleaning solvents.
- * Inspect unit for signs of physical damage.
- * Store Super Pass II in a dry, well-ventilated area consistent with battery manufacturer requirements. Duracell's recommended storage conditions are: 50°F (10°C) to 77°F (25°C) at no more than 65 percent relative humidity.
- * Units contaminated by chemical or radioactive materials must be disposed of or decontaminated in accordance with all applicable regulatory standards.
- * Replace battery every 6 months or sooner if indicated by the low battery alarm.
- * Do Not mark or apply paint to case.

Specifications

Dimensions: 2.1" wide by 3.2" high by 1.6" deep

Weight: seven ounces with battery

Alarm Audio Output: 98+ dBA @ 10 feet

Visual / Audio Mode Display:

- "OFF" - no LED display
 - a series of de-escalating, loud, attention getting audio tones
- "ON" - yellow wig-wag LED display
 - a series of escalating, loud, attention getting audio tones

"Pre-Alert"

- no motion sensed for 18 - 23 seconds
- yellow wig-wag LED display is interrupted by the pulsing of four red LEDs
- accompanied by a progressively louder, sweeping audio signal

"Alarm"

- no motion sensed for 30 - 35 sec.
- yellow wig-wag LED display is replaced by the rapid pulsing of four red LEDs
- accompanied by a rapidly modulated loud (98+ dBA) audio signal
- the alarm signal is between 1,000 and 2,000 Hertz and cycles at 5.25 seconds on and .75 seconds off as an aid for determining direction when personnel need assistance

Activation: all electronic switching

- "On" - unit may be turned ON by simultaneously pressing both side buttons when the unit is in the OFF mode
- "Alarm" - unit may be put into Alarm from the Sensing mode at any time by pressing the button on the front of the unit
- "OFF" - unit may be turned off from any mode by simultaneously pressing both side buttons

Case: rugged, high temp., impact resistant, translucent, Apache Yellow Engineered Plastic. Entire case glows during the Sensing, Pre-Alert and Alarm modes.

Methods of Attachment: rugged Grip Clip and D-ring for versatility in attaching to gear
Sound discernibility: 6 dBA against given background noise

Battery: 9 volt Duracell MN1604 required

Battery Life: estimated at 100 hrs in Sensing mode and 2 to 4 hours in the Alarm mode

Product Life: approx. 3 to 5 years depending upon frequency of use. Product should be retired from service after five years of use or earlier when damaged.